



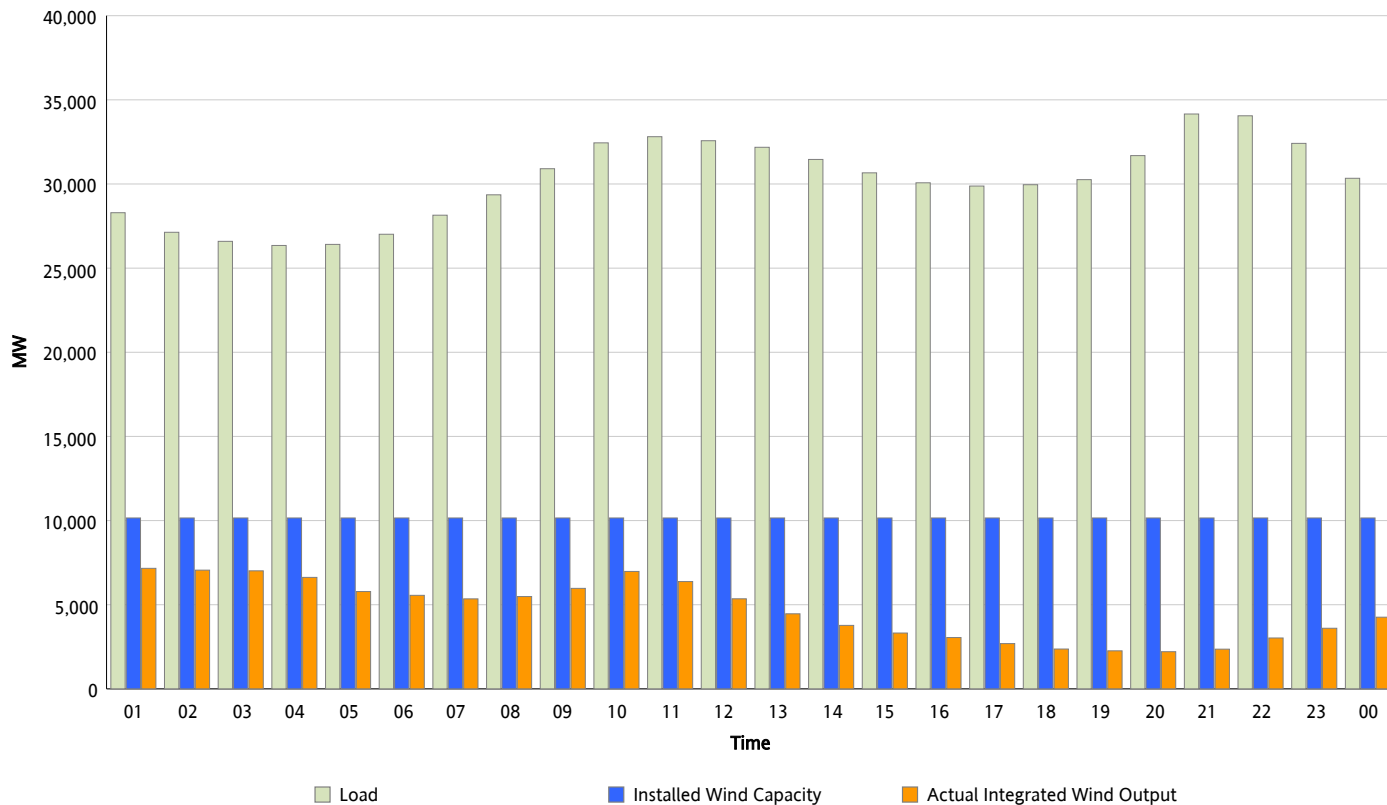
## ERCOT Grid Operations

### Wind Integration Report : 03/24/2013

Peak Load	34,159 MW
Load Peak Hour (HE)	21
Wind Over Peak	2,360 MW
Wind Record 02/09/13	9,481 MW
Max Wind Value*	7,255 MW
Wind Peak Time	00:00
Wind Integration %	24.96 %

#### Hourly Average Actual Load vs. Actual Wind Output

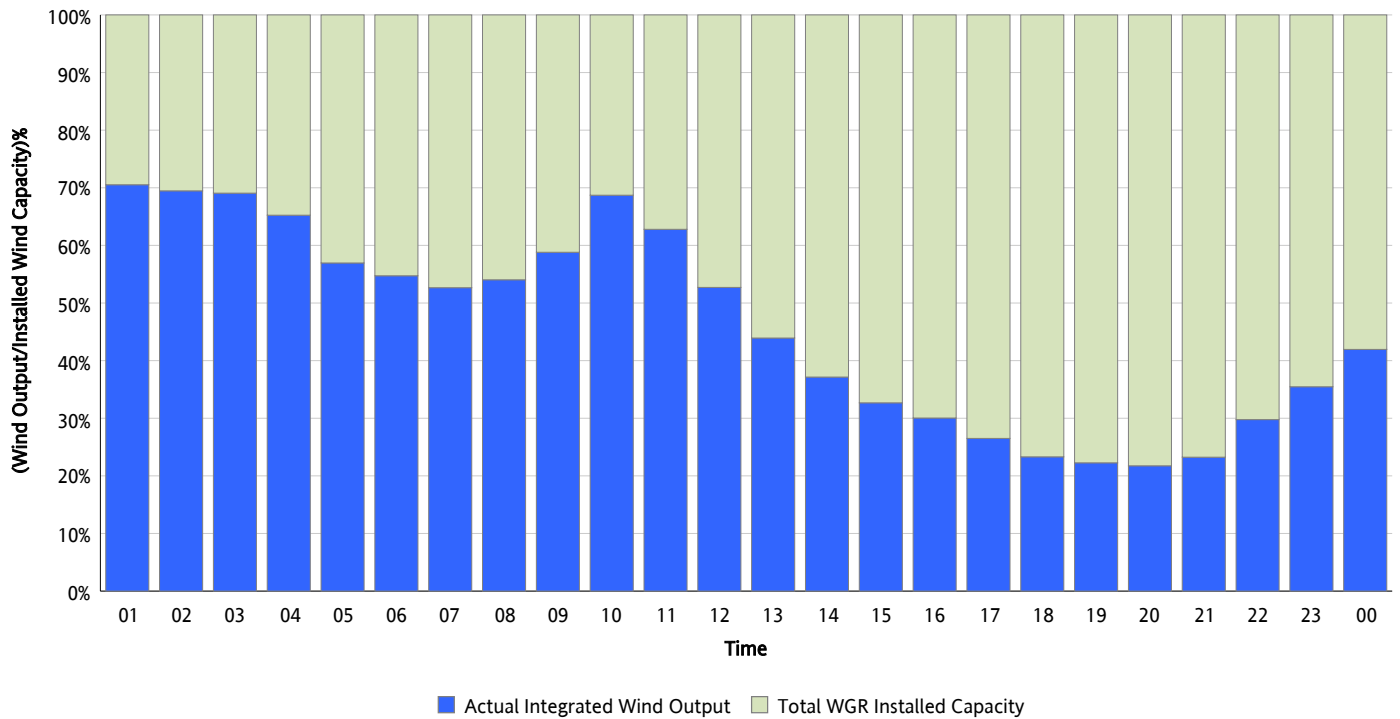
03/24/2013



\* Wind Record and Wind Max represent instantaneous values and the rest of the values are integrated over the hour

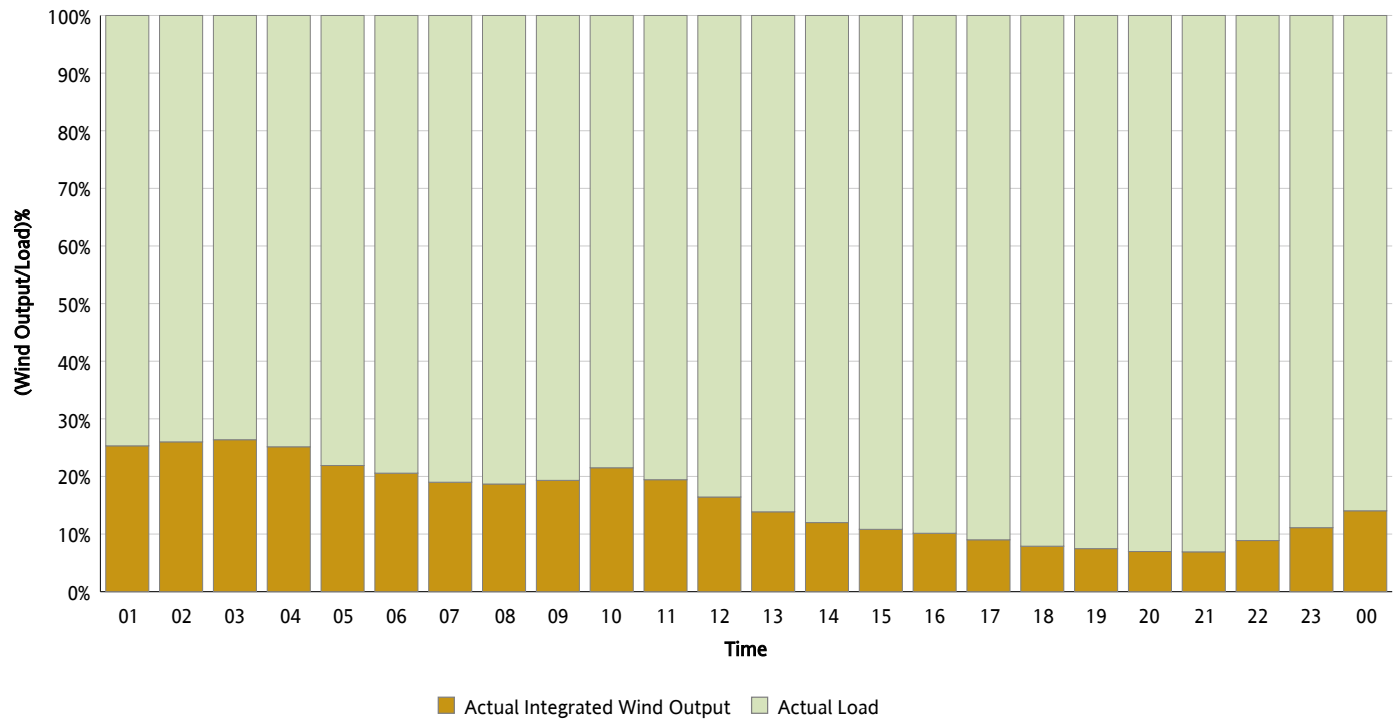
## Actual Wind Output as a Percentage of the Total Installed Wind Capacity

03/24/2013



## Actual Wind Output as a Percentage of the ERCOT Load

03/24/2013



## ERCOT Load vs. Actual Wind Output

03/17/2013 - 03/24/2013

